

Antenna, Whip

ERF4001

Description

The ERF4001 antenna is a black 2,4 GHz Wi-Fi antenna with a RG-316 cable and a SMA (Male) connector. The RG-316 cable allows the antenna to be panel mounted. The antenna can be used for applications such as, Wi-Fi, Bluetooth, GSM and Zigbee.



Technology

- WiFi
- Bluetooth
- ISM
- Zigbee

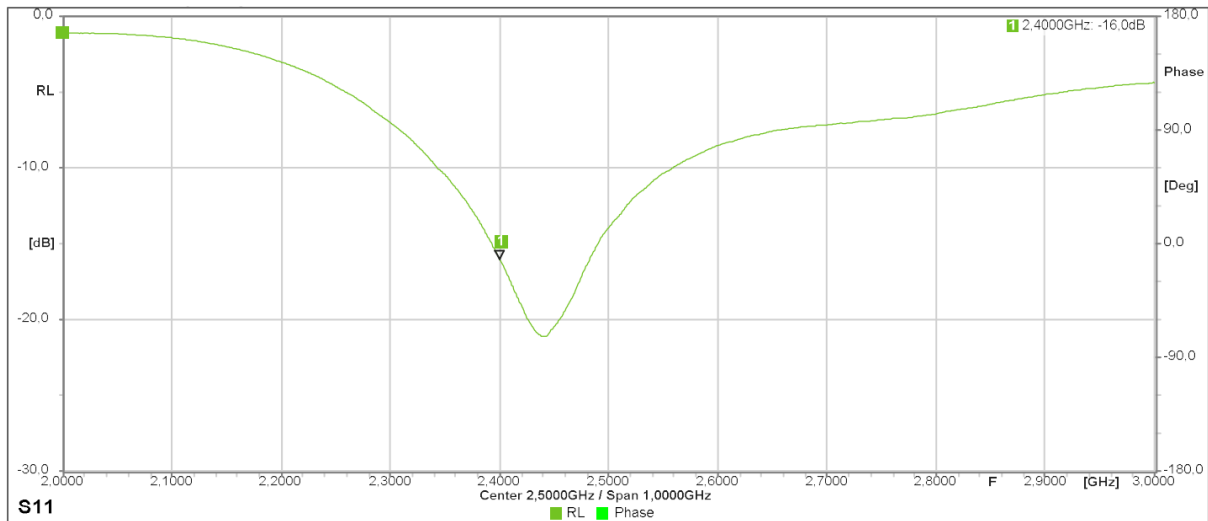
Features

Electrical Properties	Description		
Frequency marker	Frequency band MHz	Return loss dB	V.S.W.R.
1	2.400	-16.0	< 1.4
Nominal Impedance	50 Ω		
Polarization	Vertical		

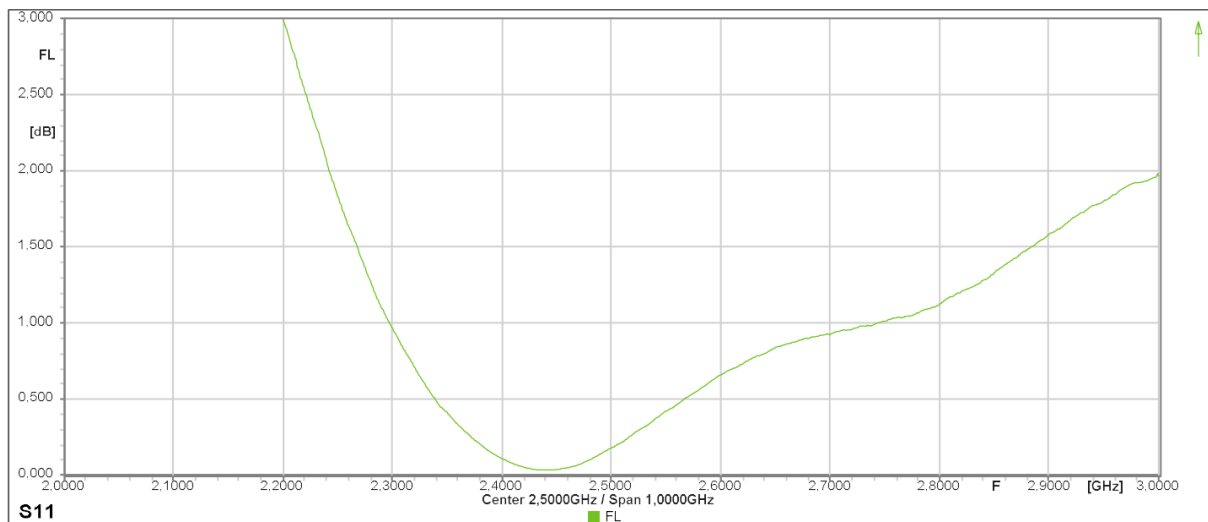
Mechanical Properties	Description
Antenna	External Antenna
Mounting	Bulk Head
Connector	SMA (Male)
Dimensions	50 mm ±2
Cable Length	RG-316/200 mm ± 10
Operating Temperature	-20°C~+60°C
Storage Temperature	-30°C~+70°C

Antenna Properties

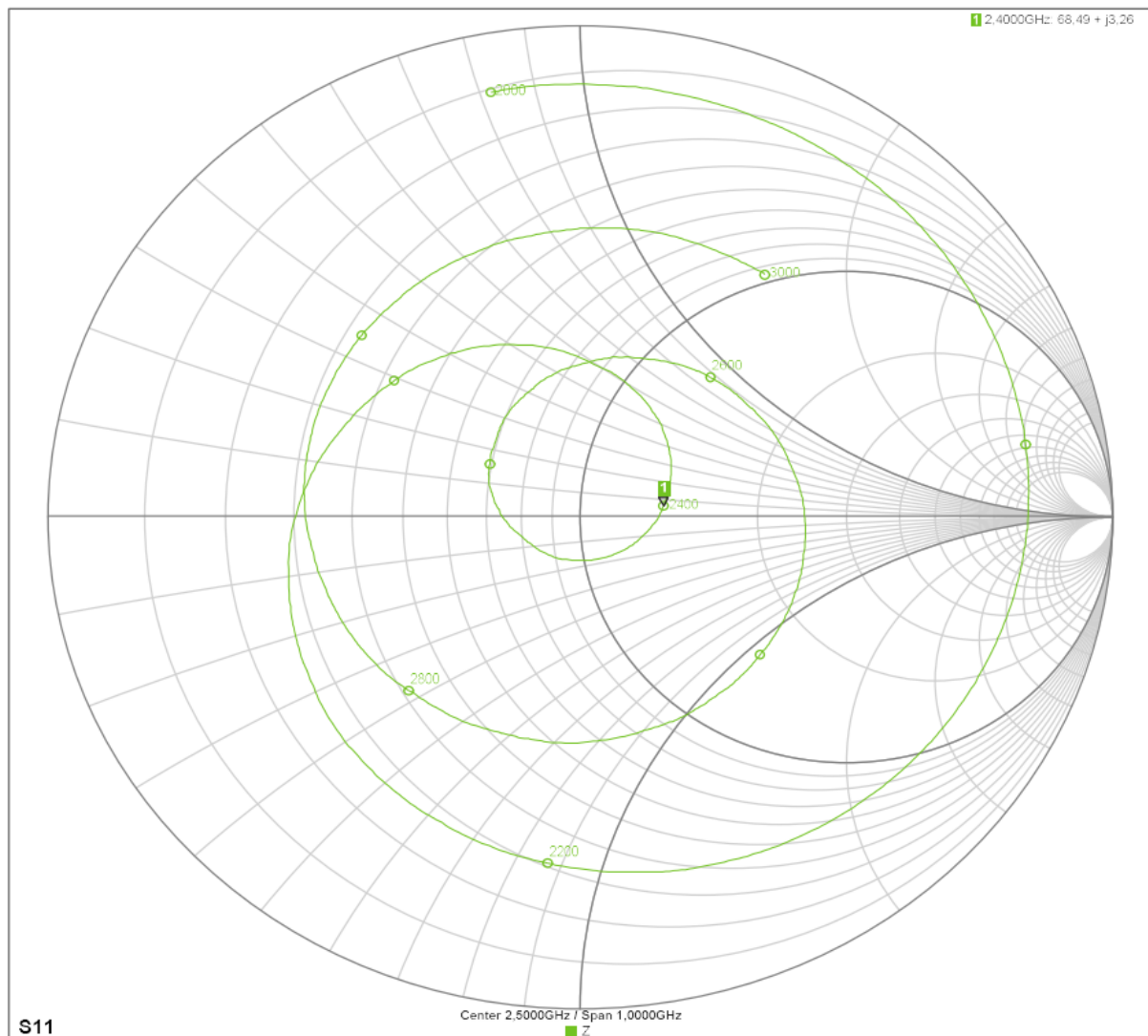
Return Loss



Forward Loss



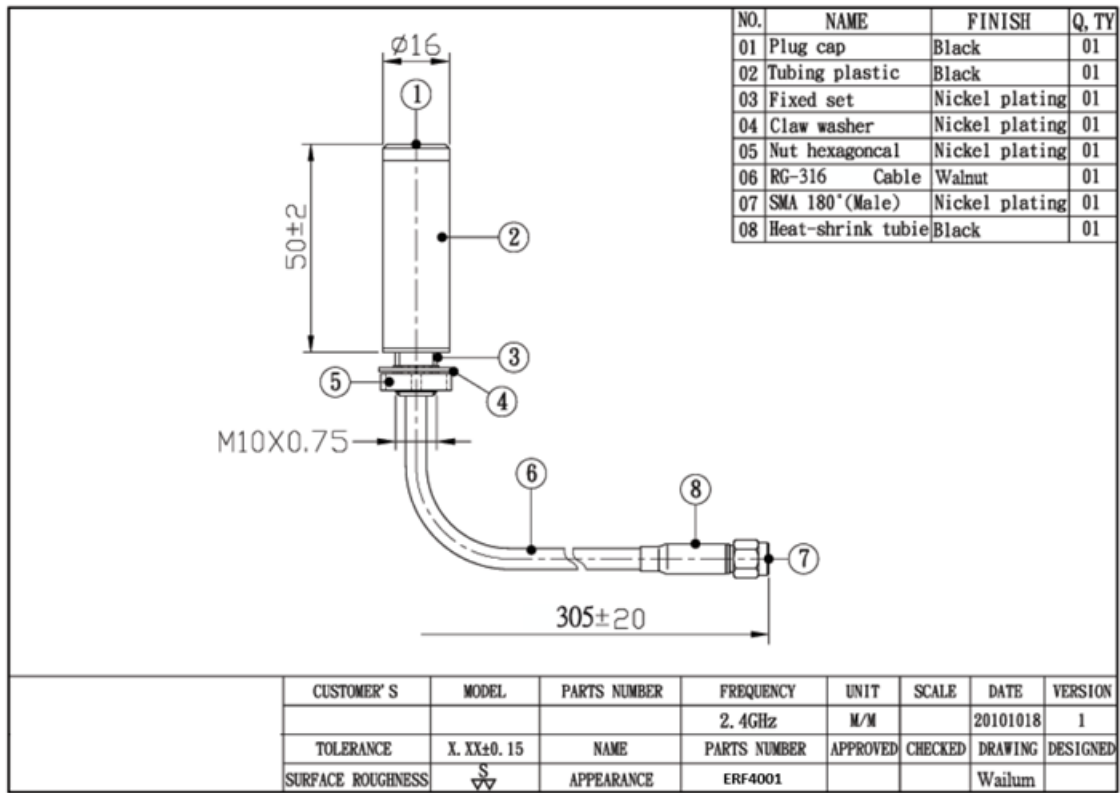
Impedance



Antenna, Whip

ERF4001

Dimensions



Connectors



SMA Male



SMA Female



RP-SMA Male



RP-SMA Female

The ERF4001 antenna uses the SMA Male connector.

Ordering information

Ordering can be done via www.summit-electronics.com or via info@summit-electronics.com. Please contact us for more information. Customisation of the product is available on request.

Technical support

For all product questions please contact us via info@summit-electronics.com

Antenna, Whip

ERF4001



Ordering information

Ordering can be done via www.summit-electronics.com or via info@summit-electronics.com. Please contact us for more information. Customisation of the product is available on request.

Technical support

For all product questions please contact us via info@summit-electronics.com

Document revision

Rev	Date	Changes
V01.00	06-04-2023	First issue of document